



# MINIATURE CLAMP

**Material-** Call for material specifications  
**Insert- Brass**

**Projecting Stud-** Steel, zinc plated  
† Projecting Stud- Stainless steel



1770



2700



2710



7094



2720



2700



7094



7094 (No hub)



2715



2720



2730

### Threaded Insert

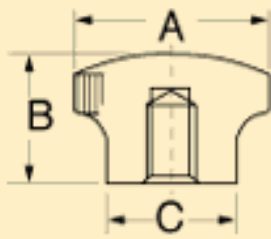
Part No.	Insert	
	Thread	Depth
2720-A	10-24	5/16
2720-Q	8-32	1/4
2720	10-32	5/16
1 "B" = 1/2, "D" = 21/64		

### Projecting Stud

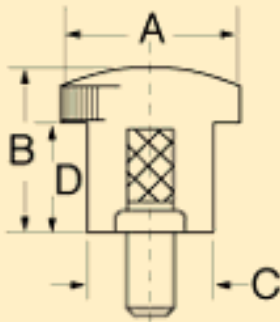
Part No.	Stud		Max Length
	Thread	Length	
2720-L	8-32	3/8	1-1/2

\*Molded plain hole for 1/4" Allen head cap screw press fit  
1 "B" = 1/2, "D" = 21/64

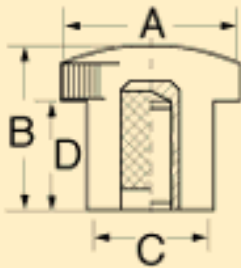
### Molded Thread



### Projecting Stud



### Threaded Insert



[« back](#)